



Senior Specialist – Urban Planning and Management

Institute for Housing and Urban Development Studies



Contents

Executive Summary	3
Institute for Housing and Urban Development Studies	4
Vision and Mission	4
IHS approach	5
Education, Advisory, Training and Research	5
Strategic Alliances	6
IHS Staff	6
Organisation	7
Academic Staff	7
Professional Services Staff	7
Positioning in the University	7
Appointment of Senior Specialist - Urban Planning & Management	8
Qualifications and competencies	9
Terms & Conditions	10
Application procedure	10
Erasmus University Rotterdam	11
Structure	12
Research and Education	12
Rotterdam and Erasmus Campus	13
Rotterdam	13
Erasmus Campus	13

Executive Summary

The Institute for Housing and Urban Development Studies (IHS) is an international academic education, research and advisory institute that operates as part of Erasmus University Rotterdam under the umbrella of the Erasmus University Holding B.V.

Academically, the institute is affiliated to the Erasmus School of Social and Behavioural Sciences and the Erasmus School of Economics. For more than 60 years, its mission has been to develop human and institutional capacities, to reduce poverty and improve the quality of life in cities. Understanding cities from different angles, IHS educates urban professionals with diverse backgrounds, engages in cutting-edge urban academic research, and consults national and local governments from across the globe.

Together with many partners IHS works at the forefront of urban development to improve the wellbeing of people living in cities. IHS makes cities work. The diverse alumni network includes over 10,000 active urban experts all over the world, ranging from architects, social scientists, economists, to public administration workers, civil servants, and government officials.

IHS has a staff of approximately 45FTE. It has undergone significant organizational restructuring over the past 3 years, and a new General Director has recently been appointed. Now, IHS seeks to appoint a new Senior Specialist in Urban Planning and Management.



Institute for Housing and Urban Development Studies

The Institute for Housing and Urban Development Studies (IHS) is an international academic education, research and advisory institute that operates as part of Erasmus University Rotterdam under the umbrella of the Erasmus University Holding B.V.

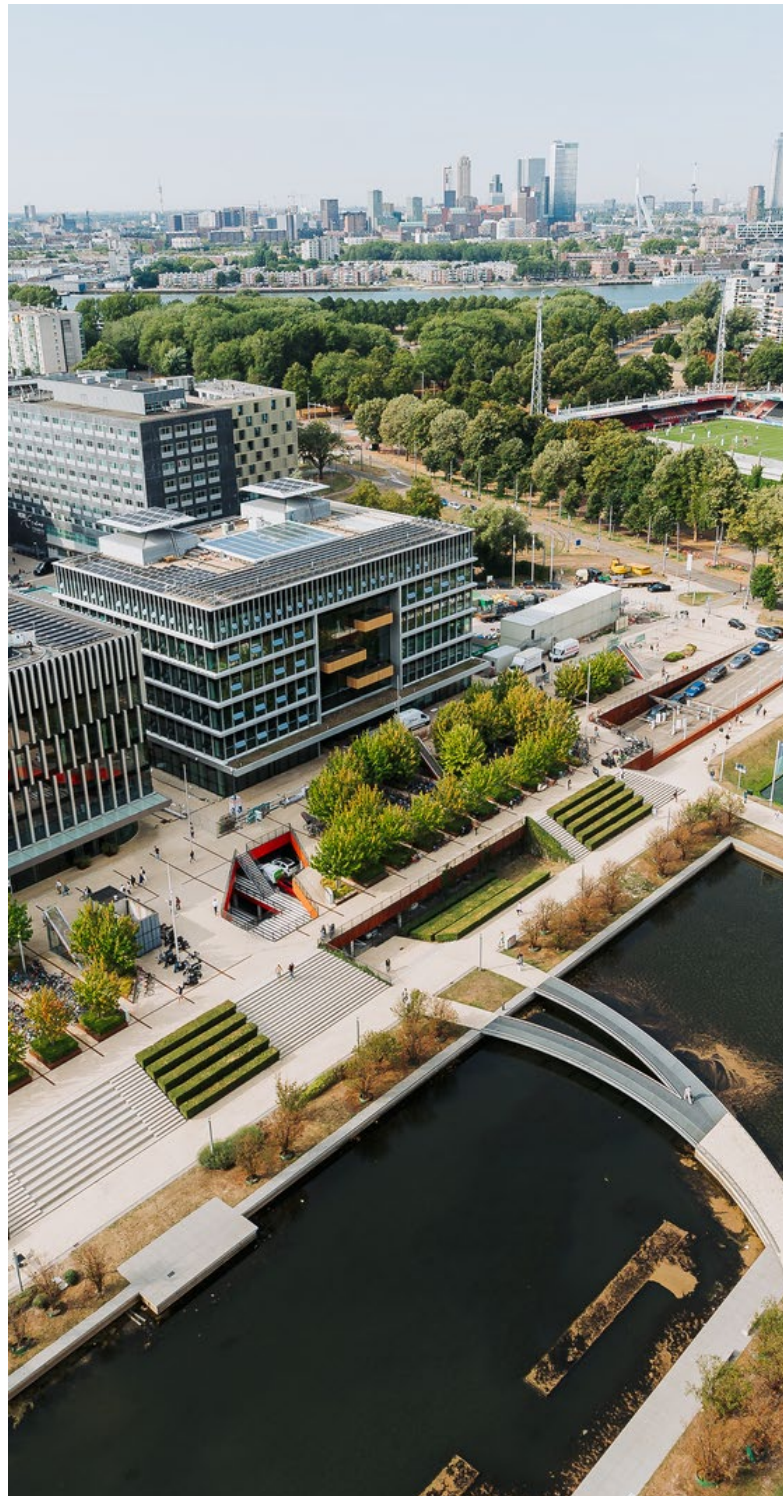
Academically, the institute is affiliated to the Erasmus School of Social and Behavioural Sciences and the Erasmus School of Economics. For more than 60 years, its mission has been to develop human and institutional capacities, to reduce poverty and improve the quality of life in cities.

Understanding cities from different perspectives, IHS staff educate urban professionals with diverse backgrounds, approaching cities from different angles, IHS educates urban professionals with diverse backgrounds, engages in cutting-edge urban academic research, and consults national and local governments from across the globe.

Together with many partners IHS works at the forefront of urban development to improve the wellbeing of people living in cities. IHS makes cities work. The institute has a diverse alumni network that includes over 10,000 active urban experts all over the world, ranging from architects, social scientists, economists, to public administration workers, civil servants, and government officials.

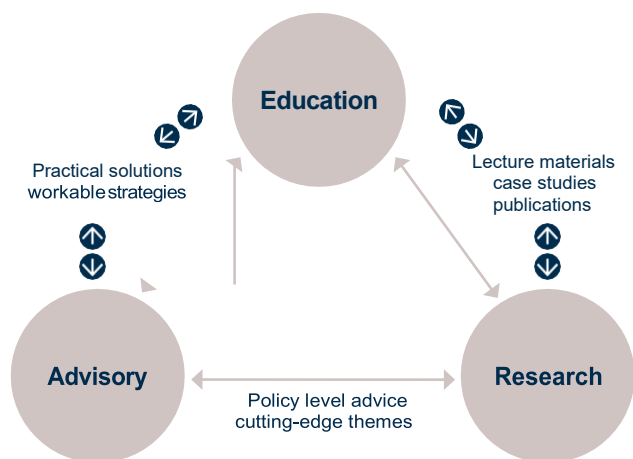
Vision and Mission

IHS envisions cities that are liveable as well as socially, economically, and environmentally sustainable. Its mission is to inspire and empower urban professionals and citizens to make cities work for all.



IHS approach

IHS' approach to the problems faced in reducing poverty and improving the quality of life in cities is based on the cross-fertilization of three activities: education, advisory services and applied research. IHS strongly believes in linking theory and practice. IHS also conducts research that furthers theory which is essential for the development of critical thinking about urban issues. Staff members spend a substantial amount of time working in the field, possessing practical expertise within the context of different countries they have worked in, and thus providing support, training and services that are relevant for course participants and clients.



Education, Advisory, Training and Research

IHS provides an environment that stimulates inspiring ideas at the crossroads of theory and practice and is a part of the high-ranking Erasmus University Rotterdam (#21 in Europe & #72 globally according to the Times Higher Education ranking).



As a multidisciplinary institute, IHS works closely with the Erasmus School of Economics and Erasmus School of Social and Behavioural Sciences and offers a variety of educational programmes to some 200 students annually who come from over 45 countries.

IHS offers four [Master tracks](#) within its own accredited Master programme targeted to mid-career students. Together with ESSB, IHS offers an (initial) master's in urban governance and a 4-year PhD trajectory programme on Urban Development & Governance. The latter is part of the Erasmus Graduate School of Social Sciences and the Humanities. In addition, IHS offers a number of short courses, refresher courses, and MOOCs.

Moreover, IHS offers Advisory, Training and Research services, by creating specialised and custom projects and programmes for external clients. IHS works in international projects, providing advisory services to an array of stakeholders including governments, organisations and institutions. The institute also works for local and national government clients. Services in this area include policy-level support, and aid in citywide strategic development and participatory processes.



Strategic Alliances

IHS has strategic alliances, partnership and framework agreements with national and local government institutions, NGOs and multilateral organisations. In The Netherlands and abroad, IHS also works in partnership with the other Dutch International Education Institutes, such as the Institute of Social Studies-ISS, International Institute for Aerospace Survey and Earth Sciences-ITC, Institute for Water Education-IHE UNESCO and Wageningen University. IHS is an active member in a number of international networks and professional discussion groups. IHS is also a knowledge partner of IBSA-HSO, a trilateral agreement between India, Brazil and South Africa, to promote South-Cooperation.

IHS Staff

IHS has a team of multi-disciplinary and multi-national staff members with expertise varying from municipal finance to participatory and strategic planning, housing policies, infrastructure and smart cities, and environmental planning and management. Staff members mix the rigour of knowledge transfer with practical expertise acquired through direct involvement in projects and advisory services throughout the world.





Organisation

Decisions are made within the Management Team (MT), consisting of the General Director, the Academic Director, three Academic heads of departments representing the academic staff, two representatives of the support staff, the Financial Controller and the Management Assistant. The MT usually meets every two to four weeks to discuss all ongoing matters. Where applicable, decisions are consulted with the works council (ondernemingsraad or OR), who may provide advice. The General Director meets with the OR on a regular basis. The General Director reports to the Supervisory Board.

Academic Staff

The [IHS Academic Staff](#) represents a rich mixture of urban professionals with very diverse backgrounds and experience. Their expertise covers three main thematic areas: Urban Socio-Spatial Development, Urban Sustainability & Climate Change Resilience, and Urban Economics & Governance.

Professional Services Staff

In addition, IHS consists of [Professional Service Staff](#) members working in Finance, Human Resources, Office Management, Library, Marketing and Communications, and the Educational Management Office.

Positioning in the University

IHS moved its premises to the Woudestein campus of the Erasmus University Rotterdam in 2000. IHS was, at the time, undergoing a complex process of reorganisation that resulted in an institutional adjustment of the way of work and programme offered. In 2004, IHS became an independent company associated with Erasmus University Holding. Currently, IHS is a social enterprise within the BV structure at the Erasmus University Rotterdam.

IHS is increasingly cooperating with the various faculties of Erasmus University and in newly formed collaborations with other institutes in the Netherlands and abroad. In Rotterdam, which is seen as a centre of modern architecture, IHS functions as a bridge to the rapidly urbanising world in developing countries and as a bridge between academic disciplines and practice.



Appointment of Senior Specialist - Urban Planning & Management

More effective planning and management will be essential to addressing global urban development challenges in the coming decades. In the face of rapid population growth and spatial expansion, much of it unplanned, cities around the world will need to find new ways to achieve sustainability, prosperity, and wellbeing for their residents. This will require better evidence to support decision-making, support to officials to develop and implement policies, and a highly skilled cadre of urban professionals.

This role will help respond to these needs. As a senior specialist at the Institute for Housing and Urban Development Studies (IHS), the postholder will work across the institute's three pillars of education, research and advisory to address some of the biggest urban challenges of our time. This is a senior role, with the postholder being expected to set strategic direction for the Institute's work in urban planning.

The post is likely to be embedded within the Urban Socio-Spatial Development Department, although depending on the postholder's specific expertise. This department focuses on the application of social, spatial and gender justice principles as a framework for analysing urban processes related to housing, land and planning, and assessing projects, plans, and policies in this regard.

The postholder is expected to play a leading role in the delivery of the flagship M.Sc. in Urban Management and Development. S/he will also contribute to other postgraduate programmes, including PhD supervision. S/he will actively seek opportunities to undertake funded research, in collaboration with internal and external colleagues, on topics related to IHS's vision and mission. Advisory / consultancy work is a critical element of IHS's impact strategy and makes a significant contribution to the organization's income.

The postholder will be expected to undertake consultancy projects on themes related to her/his area of expertise. This is likely to include capacity strengthening with local and municipal governments and supporting institutional development for universities and other research institutions.

Qualifications and competencies

The Senior Specialist in Urban Planning and Management:

- Holds a PhD degree in urban planning, spatial planning, environmental sciences, economics, geography, sociology or other disciplines related to urban management and urban sustainability.
- Has a proven background on and expertise in one or more sub-elements of urban planning and development. We are particularly interested in candidates with knowledge of planning procedures and different legal frameworks for planning, especially in comparative perspective. We expect all staff to be aware of gender transformational and postcolonial approaches, and to incorporate these in their work as appropriate.
- Has excellent methodological skills.
- Has in-depth knowledge of international organizations active in urban policy and planning, and has experience of working with such organizations (either in the capacity of a consultant/advisor or an employee).
- Has worked extensively in cities in low- and middle-income countries, ideally collaborating with academics and policy-makers.
- Has the ability and interest to develop and deliver high-quality courses and lectures and to supervise Master and PhD students.
- Has an international network and a strong track record in publications in peer-reviewed journals and in attracting research funding.
- Has international experience in a multicultural environment, has a creative and problem-solving attitude, and is able to work independently and as part of a team.
- Has excellent command of spoken and written English with fluency in other languages (including Dutch, French or Spanish) desirable.
- Formulates strategic goals and frameworks for the strategic plan of IHS, supporting the expansion of the IHS portfolio (education, research and advisory) and is responsible for reaching the targets;
- Supports IHS by actively engaging with trends, threats and opportunities to ensure a sustainable future for the institute;
- Is responsible for timely financial forecasting, budgeting, and reporting;
- Advises and informs the Supervisory Board and supports decision-making on strategic (change) processes;
- Engages in stakeholder management and maintains IHS' relationships, with all relevant public and private parties.



Terms & Conditions

- We offer a challenging job in an international and dynamic work environment.
- The position is available in Rotterdam, the Netherlands, starting for a period of 1 year, with possible extension of permanent employment, and is based on a minimum of 32 hours per week to a maximum of 40 working hours per week.
- Remuneration will be in line with the responsibilities of the role and related to the work experience of the candidate. For full-time employment the minimum salary is € 5,506 and maximum € 7,362 based on 40 hours per week, salary scale 13-14 of the CAO NU. The employment conditions include a holiday allowance of 8.0% and an end-of-year bonus of 8.3%.

Application procedure

You can apply for the Senior Specialist – Urban Planning and Management by sending your **cover letter** (with clear description of your motivations for applying for this position) and **detailed CV** including the names and contact details of two referees to Office Management (office@ihs.nl). Please add to the subject 'Application: Senior Planning Specialist'.

IHS will receive your application no later than **22 March 2023**.

A committee will evaluate the applications and selected candidate(s) will be approached for an interview.

For further information on the position, please contact Dr. David Dodman (dodman@ihs.nl) or Dr. Alonso Ayala Aleman (ayalaaleman@ihs.nl)

Erasmus University Rotterdam

Erasmus University Rotterdam (EUR), based in the dynamic and diverse city of Rotterdam, positions itself as an international knowledge hub for critical thinking and academic training, driven by a strong focus on current societal issues.

Founded over 100 years ago as the Netherlands School of Commerce, Erasmus University today is a renowned, public research university ranked 72nd according to the Times Higher Education rankings.

The university currently has more than 39.000 students and is supported by a staff of around 4000 employees of which over 190 are full professors.

The university is named after Desiderius Erasmus Roterodamus, the 15th-century Rotterdam-born humanist and theologian and assumed its current status as a full university in 1973. Scholars and students in seven faculties and two institutes work, in their specific areas of expertise, on addressing current global societal challenges.

Part of a large global network of academic partnerships, Erasmus University is also in a strategic alliance with Leiden University and Delft University of Technology. In a unique collaboration with Erasmus Medical Centre and Leiden University Medical Centre, Erasmus University is part of Medical Delta, a medical-technological consortium for health and medical technology.

Finally, Erasmus University also collaborates with public-sector bodies, science parks, and about 150 businesses. On the lively, modern campus, a very international student body of more than 100 nationalities is constantly encouraged to develop their talents and pursue their ambitions.



Structure

The university comprises seven faculties:

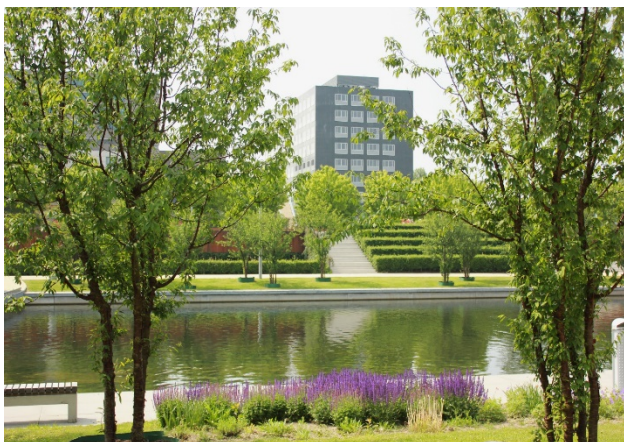
- Erasmus School of Economics;
- Erasmus School of Law;
- Erasmus School of Social and Behavioural Sciences;
- Faculty of Medicine and Health Sciences;
- Erasmus School of Philosophy;
- Erasmus School of History, Culture and Communication;
- Rotterdam School of Management, Erasmus University.

And two institutes:

- Erasmus School of Health Policy & Management;
- International Institute of Social Studies.

For more information on the university structure and organisation, please visit: <https://www.eur.nl/en/media/2020-06-32797organogrammeureng102>.

Erasmus University Rotterdam is (100%) shareholder of Erasmus University Rotterdam Holding BV of which IHS is one of the (100%) daughter-companies.



Research and Education

Erasmus University Rotterdam has a renewed mission to create a positive societal impact. It has defined a profile and a common set of Erasmian values and will develop around seven strategic priorities for the years to come. These priorities will guide the execution of the mission leading up to 2024:

- fostering our societal impact identity;
- ensuring our education is future-oriented;
- embedding excellent academic research in society;
- taking responsibility for sustainable development;
- investing in our people for the future;
- stepping up our professional services;
- making the most of our interdisciplinary potential.

Furthermore, the Erasmus Initiatives offers support to the university's objective to further strengthen social and economic impact. Interdisciplinary research activities combine theory and practice around the following themes:

- dynamics of inclusive prosperity;
- smarter choices for better health;
- vital cities and citizens.

More information:

[Research at Erasmus University](#)

[Education at Erasmus University](#)

[EUR Strategy 2020– 2024 Impact & Relevance](#)



Rotterdam and Erasmus Campus

Rotterdam

Rotterdam boasts with a variety of festivals and events, making it an attractive and fun city to live in or visit. The Rotterdam International Film Festival, the NN Marathon, the North Sea Jazz Festival, Poetry International, the Summer Carnival or AFFR, the world's largest architecture film festival, put Rotterdam right under the international spotlight. With around 3,600 cafés, bars and restaurants in the city, there is food and fun to everybody's taste.

Rotterdam has an excellent public transportation system and there are dedicated cycling routes throughout the city. The European Railways Network connects Rotterdam with all the other major cities in Europe. Paris, Berlin, London, Brussels and other major European cities are only a few hours away.

Cycling around Rotterdam you will notice the multicultural and open atmosphere of the city. Of course, the 25,000 Dutch and 3,000 international students that choose to study at the Erasmus University Rotterdam every year make a major contribution to the city's young and dynamic character. For information about the city and its facilities, please visit their website.

Erasmus Campus

IHS is located on the Erasmus University's Woudestein campus. On the campus, the international students enjoy a green and safe campus environment with convenient facilities, located in a student-friendly area in Rotterdam.

The campus offers canteens in several buildings as well as a supermarket (Spar), small shops selling study material, stationery and university souvenirs. An additional plus is the sports center, which is popular among students for its wide variety of sports activities. You can find the campus map by clicking [here](#).

